

# Environmental Sustainability Plan 2025–2030

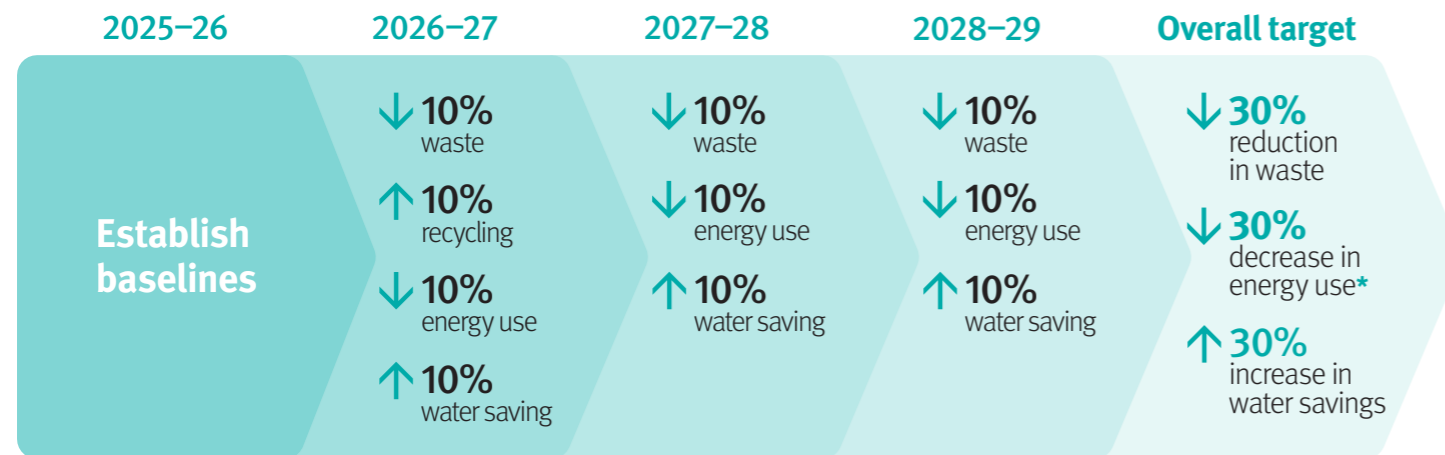


Protecting our future through sustainability

## Our commitment

The *Metro South Health Strategic Plan 2024–2028* highlights our commitment to protecting our future through sustainability by reducing our impact on the environment. The Metro South Health (MSH) Environmental Sustainability Plan outlines the pathway for best practice in environmentally sustainable health service delivery over the next 5 years. We recognise the inherent link between planetary health and human health and aim to reduce our environmental impact while being fiscally responsible, increasing our climate resilience and leading the way to a low carbon future. We will establish baseline metrics to monitor, trend and improve our environmental performance and reduce our direct and indirect greenhouse gas emissions.

## Targets



\*Targets could be influenced by government priorities/objectives and market variability.

We have an ambitious goal of Net Zero emissions<sup>1</sup> by 2050, which aligns with the targets set in the Queensland Government *Clean Economy Jobs Act 2024*. We aim to achieve this by stimulating ideas from our people, our consumers and research partners and developing tools to support and implement these ideas into action with a workplace culture underpinned by sustainability principles – reducing wasteful practices, efficiency, and innovation. Being an environmentally sustainable health service is an integral part of us delivering Better Care Together.

We acknowledge that there are many other elements to delivering environmentally sustainable healthcare, however, have consulted extensively with our consumers and workforce and their feedback has formed the basis of our immediate priority areas.

## Our priority areas



### Waste

Waste disposal contributes to greenhouse gas emissions through landfill decomposition and incineration of clinical waste. Our goal is to actively reduce, reuse and recycle waste generated from our operations.



### Resources: energy and water

Health services consume significant amounts of energy derived from fossil fuels to heat, cool and power medical equipment and buildings. Our goal is to understand our consumption patterns to progress towards carbon-neutral operations with reliable energy and water resource efficiency.



### Facilities and infrastructure

The design and complexity of healthcare facilities can exacerbate environmental impacts and contribute to increased emissions. Our goal is to improve sustainable building practices to minimise our environmental footprint and enhance efficiency and promote resilience.



### Sustainable clinical care

Healthcare is a major contributor to climate change and environmental pollution, estimated to contribute approximately 7% of Australia's total greenhouse gas emissions, and involves substantial consumption of resources. Our goal is to decarbonise clinical care by minimising potentially harmful and low-value care<sup>2</sup>.



### Products and services

We acquire a wide range of clinical and non-clinical products to provide services to the community. Choices made through procuring and purchasing of these goods can have negative environmental impacts and affect MSH's carbon footprint. Our goal is to reduce our carbon footprint<sup>3</sup> through purchasing decisions by incorporating environmental sustainability as a specific criteria in all procurements contracts.

<sup>1</sup>Net Zero is defined as balancing the greenhouse gas emissions produced by service delivery offset by emissions taken out of the atmosphere.

<sup>2</sup>Low value care in relation to environmental sustainability is defined as care that is provided that has little to no benefit to the patient's outcome or experience. Low value care can result in potentially harmful or wasteful care.

<sup>3</sup>The overall greenhouse gas emissions of MSH across Scope 1, Scope 2 and Scope 3 emissions categories according to Australian National Greenhouse Accounts Factors.

## Our values:



### Acknowledgement of Country

Metro South Health recognises and pays respect to the traditional custodians of the land and waters—the Yugambeh, Quandamooka, Jaggera, Ugarapul, Turrbal and Mununjali peoples—and to Elders, past, present and emerging.

Updated 22 August 2025



# Environmental Sustainability Plan 2025–2030

## Our priority areas

Priority areas	Waste	Resources: energy and water	Facilities and infrastructure	Sustainable clinical care	Products and services
<b>Our strategic focus</b>	Enhance waste management practices and embed recycling innovation across all Metro South sites to reduce general waste to landfill. Provide robust and appropriate education for best practice waste management for all MSH employees.	Understand and optimise our consumption patterns to reduce fossil fuel energy usage in operations. Improve water conservation and integrate environmental sustainability initiatives.	Optimise our physical facilities and built environment with a focus on efficiency, resilience and adaptability and consideration of future climate risk.	Reduce our carbon footprint by aligning patient-centred clinical care with evidence-based best practice. This includes developing strategies and implementing tools to minimise clinical waste and actively adopting a low-carbon approach to care – across everything from the products we procure and use, to the waste we generate, and the models of care delivered.	Understand and enhance our supply chain to incorporate sustainable purchasing across all areas of MSH.
<b>What we will do</b>	<ul style="list-style-type: none"> <li>» Minimise waste generated at our sites to reduce the volume that goes to landfill.</li> <li>» Adhere to the waste management hierarchy, with increased emphasis on avoidance and reducing our waste.</li> <li>» Review food waste management at all sites with the aim of reducing food waste volumes to landfill.</li> </ul>	<ul style="list-style-type: none"> <li>» Improve energy metering and reporting to increase transparency and drive resource use efficiency.</li> <li>» Regularly audit energy usage and use results to inform awareness and potential improvement programs.</li> <li>» Increase our water storage potential for re-use purposes.</li> <li>» Investigate alternative ways to recycle wastewater from our operations.</li> </ul>	<ul style="list-style-type: none"> <li>» Incorporate sustainable design principles in capital planning, new buildings and facilities to meet green building standards.</li> <li>» Monitor and improve the sustainability and efficiency of existing assets within the constraints of the age and condition of the asset and budget.</li> </ul>	<ul style="list-style-type: none"> <li>» Incorporate environmental sustainability measures when evaluating clinical services.</li> <li>» Provide ongoing education and training for clinical staff on the interdependent nature of environmental issues and patient outcomes.</li> <li>» Empower multi-disciplinary team members to collaborate and share ideas across MSH to enhance sustainability.</li> </ul>	<ul style="list-style-type: none"> <li>» Prioritise products that have a lower carbon footprint and packaging, use recycled materials or use environmentally responsible production methods.</li> <li>» Collaborate with Queensland Health to advocate for sustainability considerations in procurement of high value or contract goods and services.</li> <li>» Develop environmentally preferable criteria to enable environmentally and socially responsible purchasing of pharmaceuticals, consumables and food.</li> </ul>

## Strategic enablers

Enabler	Our people	Monitoring and performance
<b>Our strategic focus</b>	Engage our highly skilled and passionate workforce to champion environmental sustainability across MSH and emphasise environmentally sustainable decision making in their roles. Encourage shared responsibility among our people and consumers through collaboration and advocacy.	Measure, monitor and report on key metrics to ensure transparency and accountability as well as tracking our progress towards our sustainability goals.
<b>What we will do</b>	<ul style="list-style-type: none"> <li>» Establish appropriate governance of environmental sustainability initiatives, focusing on a lessons-learnt approach.</li> <li>» Empower our people to make evidence-based environmentally sustainable improvements to their ways of working.</li> <li>» Showcase positive stories of sustainability across our organisation, with an effort to rollout successful initiatives across all sites and directorates.</li> <li>» Leverage research partnerships to explore innovative approaches and solutions for environmental sustainability.</li> </ul>	<ul style="list-style-type: none"> <li>» Develop robust reporting to establish baselines for our priority areas ensuring transparency and accountability.</li> <li>» Improve data capture to guide and support operational and strategic decision making.</li> <li>» Develop implementation action plans for all priority areas by end of 2025.</li> </ul>

**Environmental sustainability is like a tree:** the limbs and branches are what needs to be achieved, but the tree can't grow without the roots of strong leadership.